

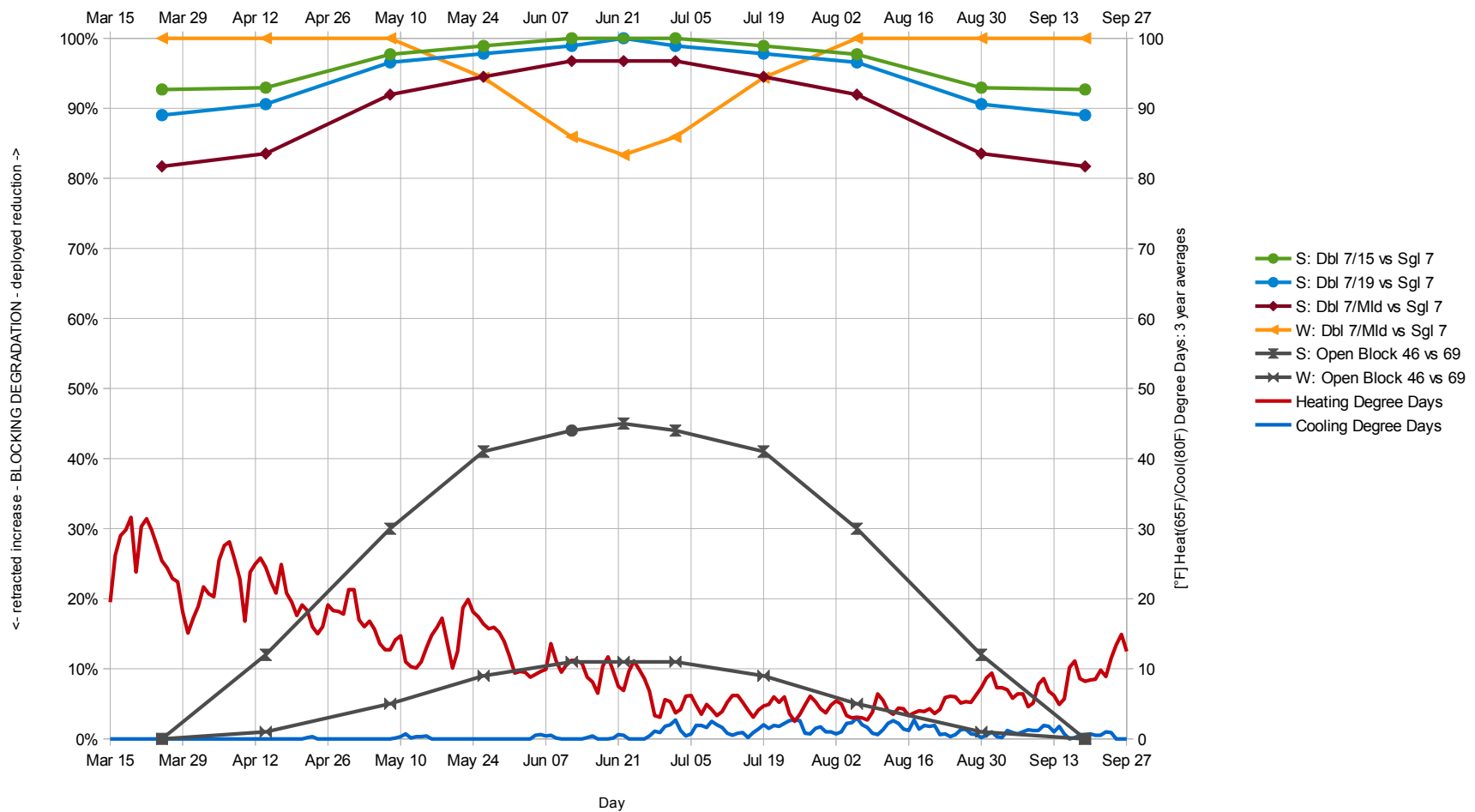
SummerPlot

Monday, March 25, 2013
 Sunday, April 14, 2013
 Wednesday, May 08, 2013
 Sunday, May 26, 2013
 Wednesday, June 12, 2013
 Saturday, June 22, 2013
 Tuesday, July 02, 2013

S: Open Block 46 vs 69	W: Open Block 46 vs 69	S: Dbl 7/15 vs Sgl 7	S: Dbl 7/15 vs Sgl 7	S: Dbl 7/Mld vs Sgl 7	W: Dbl 7/Mld vs Sgl 7
0%	0%	89%	93%	82%	100%
12%	1%	91%	93%	84%	100%
30%	5%	97%	98%	92%	100%
41%	9%	98%	99%	95%	94%
44%	11%	99%	100%	97%	86%
45%	11%	100%	100%	97%	83%
45%	11%	100%	100%	97%	83%

Spring / Summer Plot

Comparisons against tightest single grate (S: South, W: West)



Saturday, June 22, 2013

	1" High Single Grate		2.5" High Single Grate		2.5" High Double Grate		2.5" High Double Grate		2.5"/1" High Double Grate		2.5" High Double Grate O	
	South	West	South	West	South	West	South	West	South	West	South	West
#1 TL: 1-3/16, 1/8" bars	56%	43%										
Woodside 1" x 1.75"	71%	68%										
Woodside 1" x 2.5"			78%	70%								
19-SGLi-4: 1" x 1"	59%	45%										
19-SGLi-4: 1" x 2.5"			78%	71%	92%	71%					45%	11%
15-SGLi-4: 0.75" x 1"	67%	57%										
15-SGLi-4: 0.75" x 2.5"			83%	71%			92%	70%				
11-SGLi-4: 0.5" x 1"	77%	70%										
11-SGLi-4: 0.5" x 2.5"			88%	71%								
7-SGLi-4: 0.25" x 1"	88%	71%										
7-SGLi-4: 0.25" x 2.5"			92%	72%	92%	71%	92%	70%			45%	11%
Molded: 0.75" x 1"	68%	58%							89%	60%		
7-SGLi-4: 0.25" x 2.5"			92%	72%					89%	60%		
Panel Size (SF)	9		9		14		14		14		14	
Panel Weight (lbs)	57 (worst case)		138 (worst case)		83		104		40		83	

Date used:

06/22/2013

Copyright 2014 Craig W. Hughes

2013-07-02

Tuesday, July 02, 2013

	1" High Single Grate		2.5" High Single Grate		2.5" High Double Grate		2.5" High Double Grate		2.5"/1" High Double Grate		2.5" High Double Grate O	
	South	West	South	West	South	West	South	West	South	West	South	West
#1 TL: 1-3/16, 1/8" bars	56%	44%										
Woodside 1" x 1.75"	71%	68%										
Woodside 1" x 2.5"			78%	70%								
19-SGLi-4: 1" x 1"	58%	46%										
19-SGLi-4: 1" x 2.5"			78%	70%	91%	70%					44%	11%
15-SGLi-4: 0.75" x 1"	66%	58%										
15-SGLi-4: 0.75" x 2.5"			82%	71%			92%	71%				
11-SGLi-4: 0.5" x 1"	76%	70%										
11-SGLi-4: 0.5" x 2.5"			87%	71%								
7-SGLi-4: 0.25" x 1"	88%	71%										
7-SGLi-4: 0.25" x 2.5"			92%	71%	91%	70%	92%	71%			44%	11%
Molded: 0.75" x 1"	68%	59%							89%	61%		
7-SGLi-4: 0.25" x 2.5"			92%	71%					89%	61%		
Panel Size (SF)	9		9		14		14		14		14	
Panel Weight (lbs)	57 (worst case)		138 (worst case)		83		104		40		83	

Date used: 07/02/2013

Copyright 2014 Craig W. Hughes

2013-07-19

Friday, July 19, 2013

	1" High Single Grate		2.5" High Single Grate		2.5" High Double Grate		2.5" High Double Grate		2.5"/1" High Double Grate		2.5" High Double Grate O	
	South	West	South	West	South	West	South	West	South	West	South	West
#1 TL: 1-3/16, 1/8" bars	56%	50%										
Woodside 1" x 1.75"	71%	70%										
Woodside 1" x 2.5"			77%	71%								
19-SGLi-4: 1" x 1"	58%	52%										
19-SGLi-4: 1" x 2.5"			77%	71%	89%	71%					41%	9%
15-SGLi-4: 0.75" x 1"	66%	65%										
15-SGLi-4: 0.75" x 2.5"			82%	71%			90%	71%				
11-SGLi-4: 0.5" x 1"	76%	71%										
11-SGLi-4: 0.5" x 2.5"			86%	71%								
7-SGLi-4: 0.25" x 1"	86%	71%										
7-SGLi-4: 0.25" x 2.5"			91%	71%	89%	71%	90%	71%			41%	9%
Molded: 0.75" x 1"	68%	66%							86%	67%		
7-SGLi-4: 0.25" x 2.5"			91%	71%					86%	67%		
Panel Size (SF)	9		9		14		14		14		14	
Panel Weight (lbs)	57 (worst case)		138 (worst case)		83		104		40		83	

Date used:

07/19/2013

Copyright 2014 Craig W. Hughes

Tuesday, August 06, 2013

	1" High Single Grate		2.5" High Single Grate		2.5" High Double Grate		2.5" High Double Grate		2.5"/1" High Double Grate		2.5" High Double Grate O	
	South	West	South	West	South	West	South	West	South	West	South	West
#1 TL: 1-3/16, 1/8" bars	55%	61%										
Woodside 1" x 1.75"	69%	70%										
Woodside 1" x 2.5"			75%	70%								
19-SGLi-4: 1" x 1"	57%	62%										
19-SGLi-4: 1" x 2.5"			75%	70%	84%	70%					30%	5%
15-SGLi-4: 0.75" x 1"	65%	69%										
15-SGLi-4: 0.75" x 2.5"			79%	70%			85%	70%				
11-SGLi-4: 0.5" x 1"	74%	70%										
11-SGLi-4: 0.5" x 2.5"			83%	70%								
7-SGLi-4: 0.25" x 1"	84%	70%										
7-SGLi-4: 0.25" x 2.5"			87%	70%	84%	70%	85%	70%			30%	5%
Molded: 0.75" x 1"	67%	69%							80%	70%		
7-SGLi-4: 0.25" x 2.5"			87%	70%					80%	70%		
Panel Size (SF)	9		9		14		14		14		14	
Panel Weight (lbs)	57 (worst case)		138 (worst case)		83		104		40		83	

Date used:

08/06/2013

Copyright 2014 Craig W. Hughes

Friday, August 30, 2013

	1" High Single Grate		2.5" High Single Grate		2.5" High Double Grate		2.5" High Double Grate		2.5"/1" High Double Grate		2.5" High Double Grate O	
	South	West	South	West	South	West	South	West	South	West	South	West
#1 TL: 1-3/16, 1/8" bars	56%	66%										
Woodside 1" x 1.75"	69%	67%										
Woodside 1" x 2.5"			74%	67%								
19-SGLi-4: 1" x 1"	58%	67%										
19-SGLi-4: 1" x 2.5"			74%	67%	77%	67%					12%	1%
15-SGLi-4: 0.75" x 1"	65%	67%										
15-SGLi-4: 0.75" x 2.5"			78%	67%			79%	67%				
11-SGLi-4: 0.5" x 1"	74%	67%										
11-SGLi-4: 0.5" x 2.5"			82%	67%								
7-SGLi-4: 0.25" x 1"	82%	67%										
7-SGLi-4: 0.25" x 2.5"			85%	67%	77%	67%	79%	67%			12%	1%
Molded: 0.75" x 1"	67%	67%							71%	67%		
7-SGLi-4: 0.25" x 2.5"			85%	67%					71%	67%		
Panel Size (SF)	9		9		14		14		14		14	
Panel Weight (lbs)	57 (worst case)		138 (worst case)		83		104		40		83	

Date used:

08/30/2013

Copyright 2014 Craig W. Hughes

Thursday, September 19, 2013

	1" High Single Grate		2.5" High Single Grate		2.5" High Double Grate		2.5" High Double Grate		2.5"/1" High Double Grate		2.5" High Double Grate O	
	South	West	South	West	South	West	South	West	South	West	South	West
#1 TL: 1-3/16, 1/8" bars	57%	63%										
Woodside 1" x 1.75"	69%	63%										
Woodside 1" x 2.5"			73%	63%								
19-SGLi-4: 1" x 1"	59%	63%										
19-SGLi-4: 1" x 2.5"			73%	63%	73%	63%					0%	0%
15-SGLi-4: 0.75" x 1"	66%	63%										
15-SGLi-4: 0.75" x 2.5"			76%	63%			76%	63%				
11-SGLi-4: 0.5" x 1"	73%	63%										
11-SGLi-4: 0.5" x 2.5"			80%	63%								
7-SGLi-4: 0.25" x 1"	80%	63%										
7-SGLi-4: 0.25" x 2.5"			82%	63%	73%	63%	76%	63%			0%	0%
Molded: 0.75" x 1"	67%	63%							67%	63%		
7-SGLi-4: 0.25" x 2.5"			82%	64%					67%	63%		
Panel Size (SF)	9		9		14		14		14		14	
Panel Weight (lbs)	57 (worst case)		138 (worst case)		83		104		40		83	

Date used:

09/19/2013

Copyright 2014 Craig W. Hughes